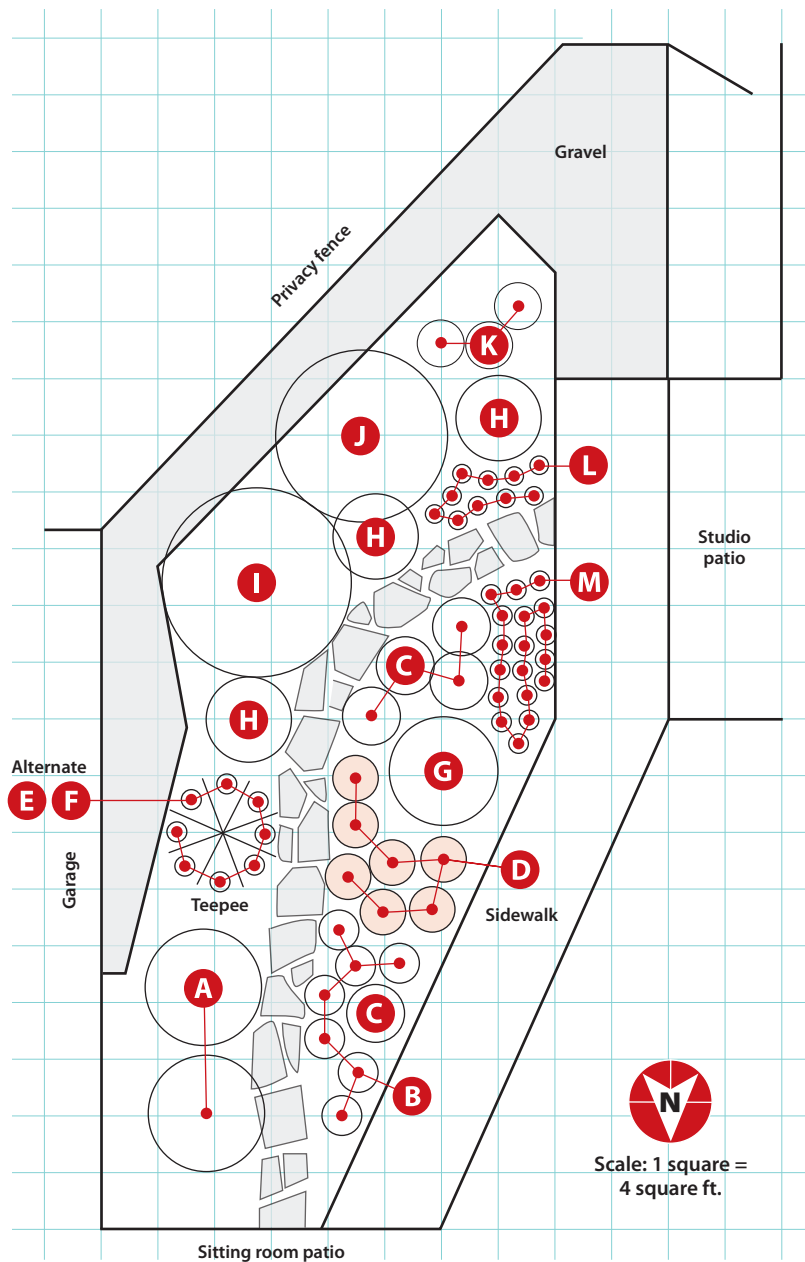


## TROPICAL AND EDIBLE

An enclosed space like this is ideal for growing edibles and tropical ornamental plants, protecting them from cold winds. The fence and garage (and sidewalk) warm the soil to give you a headstart on spring planting and keep it warmer longer in fall.

Both the hibiscus and rhubarb remain in the garden year-round, while in cold-winter areas you'll need to dig up the tropicals (banana, elephant ear and cannas) to move indoors for winter. To make transitions easier, grow them in large pots. After your last spring frost date, sink them into the ground. Then you can easily get them inside in fall.

There's a trick to keeping the leafy greens going for a long time. Instead of harvesting the entire plant, pick as many outer leaves as you need at one time, which stimulates the plant to produce new leaves. They'll keep going through fall and into winter. And if your winter isn't too wet, they just might grow right into next spring's planting time! □



## THE GARDEN'S PALETTE

Code	Plant Name	No. to Plant	Type	Blooms	Height/ Width	Cold/Heat Zones	Comments
A	Hosta <i>Hosta 'Dick Ward'</i>	2	Perennial	Lavender; early summer	16-20 in./ 24-48 in.	3-9/9-1	Part shade to full sun; large, rippled, green-edged gold leaves; slug-resistant
B	Red Russian (Ragged Jack) kale	7	Biennial grown as an annual	NA	12-36 in./ 18-24 in.	5-8/9-1	Full sun to part shade; prefers cool weather; purple-veined, blue-green leaves; frost enhances flavor
C	Lacinato (Dinosaur) kale	5	Biennial grown as an annual	NA	18-36 in./ 18-30 in.	5-9/9-1	Full sun to part shade; narrow, upright, crinkled leaves; deep green to almost black; can grow through winter
D	Collards	7	Biennial grown as an annual	NA	24-36 in./ 18-24 in.	NA/10-1	Full sun to part shade; more heat-tolerant than kale; large blue-green leaves; grows through mild winters
E	Hyacinth bean <i>Lablab purpureus</i>	4	Tender perennial vine	Purple-pink; midsummer to frost	6-10 ft./ 1-2 ft.	10-12/12-1	Full sun; eye-catching, purple-pink edible flowers at same time as shiny deep magenta pods
F	Scarlet runner bean <i>Phaseolus coccineus</i>	4	Annual vine	Red-orange; summer to frost	8-12 ft./ 1-2 ft.	NA/12-1	Full sun; edible red-orange flowers and beans at same time; use small beans fresh; let some mature for dried beans
G	Rhubarb <i>Rheum x coltorum</i>	1	Perennial	Cream, pink- or red-tinged spikes; summer	24-36 in./ 36-48 in.	2-8/8-1	Harvest red to green stalks in spring; large toxic leaves; in warm areas, cut off flowers to encourage larger stems
H	Hardy hibiscus <i>Hibiscus Summerific™</i> 'Summer Storm'	3	Shrub	Pink with cranberry eye; midsummer to fall	4-5 ft./ 3-5 ft.	4-9/9-1	Full sun; deep purple, maplelike leaves 8 to 10 in. blossoms
I	Elephant ear <i>Colocasia gigantea</i> 'Thailand Giant'	1	Tender tuber	White; summer	7-9 ft./ 6-8 ft.	8-10/10-1	Full sun; huge (5 ft. long by 4 ft. wide), slightly upfacing gray-green leaves form a canopy that you can walk beneath
J	Abyssinian banana <i>Ensete ventricosum</i> 'Maurelii'	1	Tender perennial	White; summer	8-10 ft./ 6-8 ft.	10-12/12-1	Full sun; maroon-red new foliage; red at base of leaves; keep soil moist, protect from wind; rarely fruits, inedible
K	Canna <i>Canna Tropicanna™</i> 'Phasion'	3	Tender rhizome	Peachy orange; summer to early fall	4-6 ft./ 18-36 in.	7-12/12-1	Full sun to part shade; large, sunset-colored variegated leaves; grow where sun can shine through leaves
L	Rainbow chard	10	Annual	NA	6-12 in./ 6-8 in.	NA/9-1	Full sun, provide shade in summer; prefers cool weather; colorful midribs (orange, pink, silver, red and gold)
M	Bull's Blood beet	18	Annual	NA	6-12 in./ 3-6 in.	NA/9-1	Full sun; striking, deep red flavorful leaves; let some keep growing if you want to eat the sweet roots, too