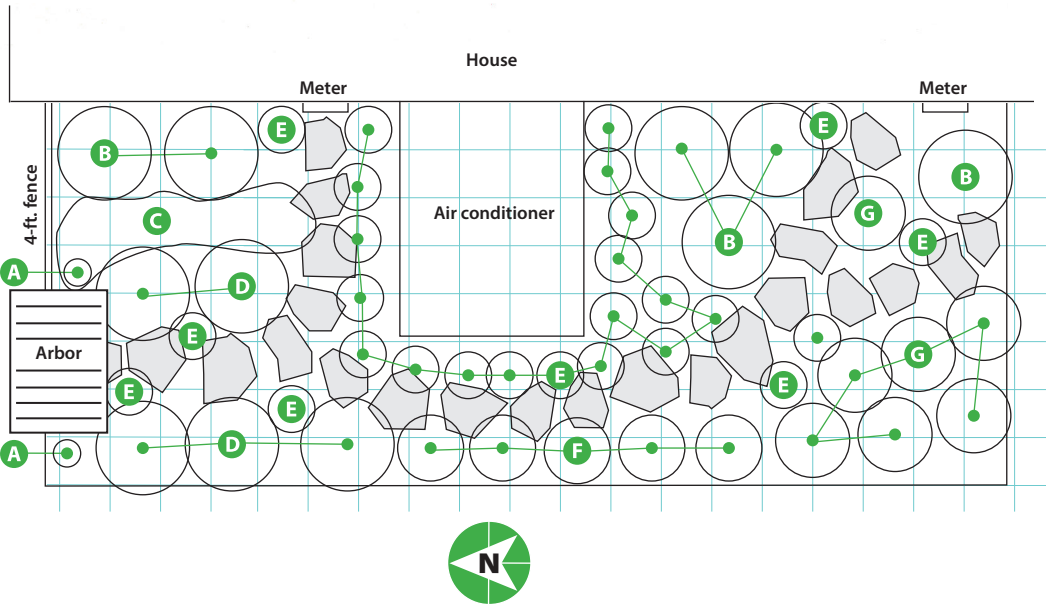


TOUGH PLACES, TOUGH PLANTS

Every yard has a spot with some “uglies” to hide, and often that area is a narrow strip like this one, along the side of the house. But why waste space? This planting from the makeover we featured in issue 108 dresses up this long, thin area while stepping stones keep it easy to reach the air conditioner and utilities. We’ve filled it with sun- and heat-loving plants that don’t need much care to thrive. □



Code	Plant Name	No. to Plant	Cold/Heat Zones
A	Clematis <i>Clematis</i> 'Bill MacKenzie'	2	4-9/ 9-1
B	Switchgrass <i>Panicum virgatum</i> 'Dallas Blues'	6	5-9/ 9-1
C	Cosmos <i>Cosmos sulphureus</i> 'Polidor'	(Seed, direct sow)	Annual/ 12-1
D	Lavender <i>Lavandula xintermedia</i> 'Provence'	5	5-10/ 10-1
E	Woolly thyme <i>Thymus pseudolanuginosus</i>	26	5-8/ 8-1
F	Ozark sundrop <i>Oenothera macrocarpa</i>	5	3-7/ 7-1
G	Mexican hat <i>Ratibida columnifera</i>	7	4-8/ 8-1



Scale: 1 square = 1 square ft.