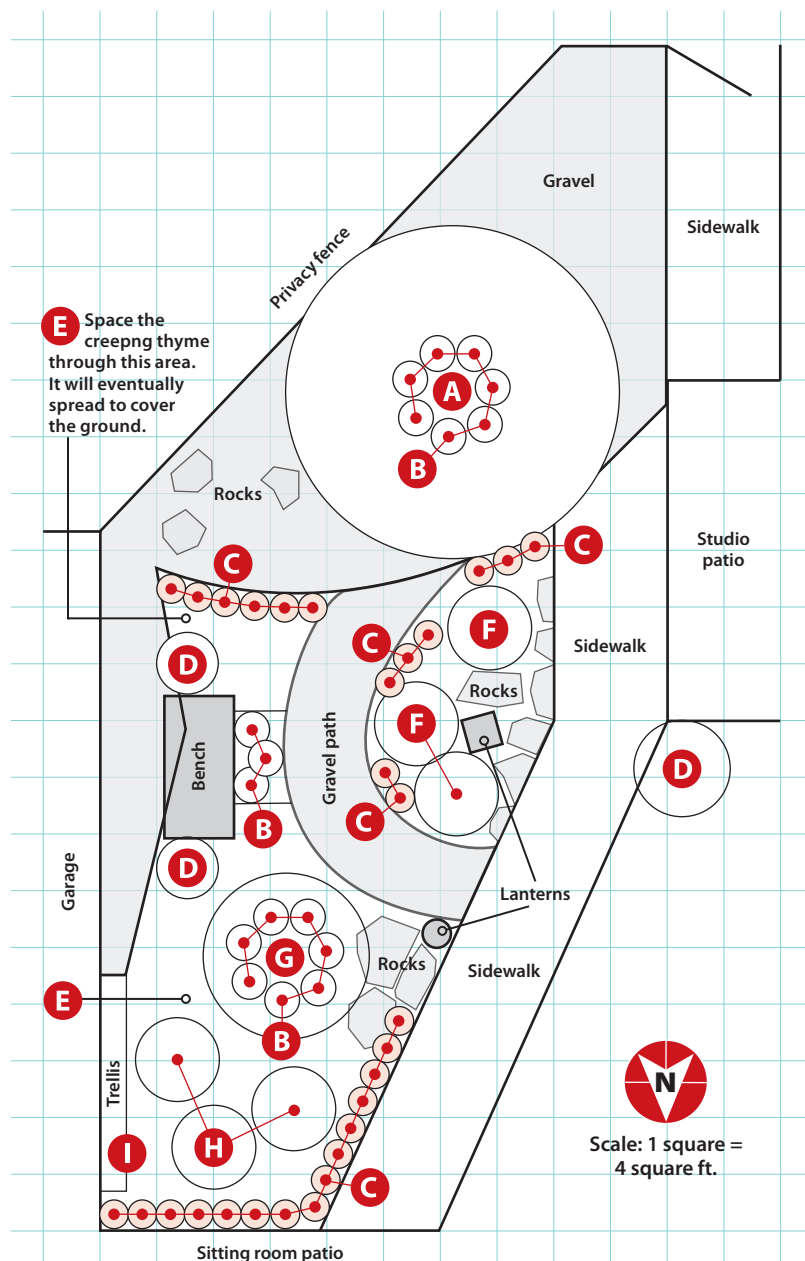




RELAX AND ENJOY THE VIEW

In the Japanese style, simple plantings emphasize individual form. To create a unique view from each porch, I divided the garden into two parts so you can appreciate each plant. At the far end is the raked gravel area with a weeping Higan cherry as the focal point. From the sitting room patio, the tree creates a lovely four-season backdrop that softens the fence. Balancing the weeping Higan cherry, the dwarf Japanese maple in the green space has a similar form, but on a smaller scale. Containers of giant black bamboo flank a simple wood bench and draw the eye up while adding interest to the garage wall. Another container draws attention away from the roof post of the studio patio. Take your shoes off and enjoy the textural contrasts — from the smooth concrete sidewalk edging the garden to the semi-circular crushed stone path. Feel the soft Irish moss at your feet while you sit on the bench. Relax and take in the changing seasons in the garden. □



THE GARDEN'S PALETTE

Code	Plant Name	No. to Plant	Type	Blooms	Height/Width	Cold/Heat Zones	Comments
A	Weeping Higan cherry <i>Prunus pendula</i> 'Pendula Rosea'	1	Tree	Light to rose-pink; spring	20-30 ft./15-20 ft.	5-8/8-1	Full sun to part shade; slow-growing; beautiful weeping form is enhanced by snow in winter
B	Irish moss <i>Sagina subulata</i>	17	Evergreen ground cover	White; spring	1-2 in./12-15 in.	4-8/8-1	Part to full shade; looks like moss; soft to the touch; tolerates moderate foot traffic
C	Lilyturf <i>Liriope muscari</i>	29	Perennial	Lilac; late summer	6-12 in./6-12 in.	5-10/10-1	Full sun to part shade; semi-evergreen; drought- and air-pollution tolerant; deer- and rabbit-resistant
D	Giant black bamboo <i>Phyllostachys nigra</i> 'Daikokuchiku'	3	Tender perennial	NA	6-20 ft. in container/ Varies	7-10/10-1	Full sun to part shade; sandy soil; edible shoots; black stems in older plants; over-winter indoors where it's not hardy
E	Creeping thyme <i>Thymus serpyllum</i> 'Pink Chintz'	12	Perennial	Pink; summer	2-3 in./8-24 in.	5-8/8-1	Full sun; prefers dry, shallow or rocky soil; drought- and air-pollution tolerant; deer-resistant; fragrant; attracts butterflies; culinary herb; edible flowers
F	Rose <i>Rosa Flower Carpet®</i> White	3	Shrub	White; midspring to frost	24-30 in./30-36 in.	5-10/10-1	Full sun; tolerates any soil type, drought and air pollution; attracts butterflies; continuous bloom
G	Japanese maple <i>Acer palmatum</i> 'Red Select'	1	Tree	Red; midspring	6-10 ft./8-15 ft.	5-8/8-1	Full sun to part shade; rabbit-resistant; good fall color; attractive winter form
H	Rhododendron <i>Rhododendron</i> 'Ramapo'	3	Shrub	Lilac-purple; spring	1-3 ft./2-3 ft.	5-9/9-1	Full sun to part shade; deer-resistant; compact plant; small evergreen leaves; attracts butterflies
I	Goldflame honeysuckle <i>Lonicera x heckrottii</i> 'Gold Flame'	1	Vine	Pink; spring to summer	10-20 ft./Spreading	5-9/9-1	Full sun to part shade; fragrant flowers; showy fruit; attracts hummingbirds and butterflies