

Winning Combination 1

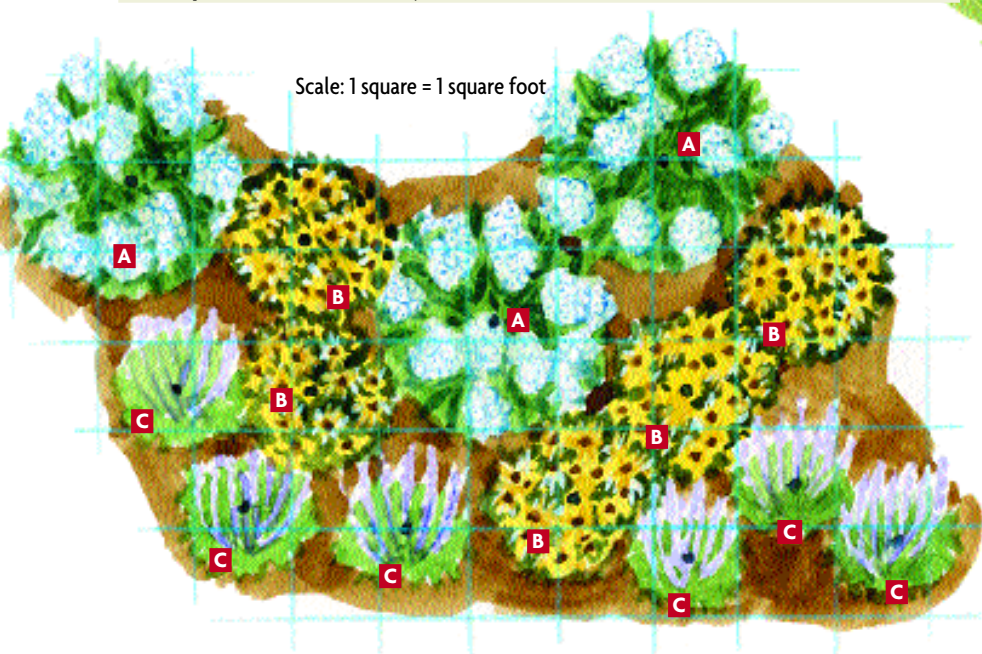
full sun

Blue is one of the most sought-after colors in the garden. And colors like yellow and white set it off spectacularly. Whether you have a small or large space, you can mix these three plants together to ensure color from early through late summer.

The show will start in early summer with veronica and phlox blooming together. If you continue to deadhead the veronica, it'll bloom on and off through fall. In late summer, the black-eyed Susans will show their sunny blooms. Leave them standing through winter to feed the birds. However, if you don't want leftover seeds to sprout in your garden, it may be best to deadhead them after they bloom.

These plants are all easy-care perennials that do best in full sun and well-drained soil.

Plant list			
Code	Plant Name	Cold/Heat Zones	No. of Plants
A	Garden phlox <i>Phlox paniculata</i> 'Fujiyama' ('Mt. Fuji')	4 to 8/8 to 1	3
B	Black-eyed Susan <i>Rudbeckia fulgida sullivantii</i> 'Goldsturm'	3 to 9/9 to 1	5
C	Speedwell <i>Veronica</i> 'Sunny Border Blue'	4 to 8/8 to 1	6



THANKS FOR TRYING THIS FREE PLAN!

This collection of plants has been especially grown and packaged for you by Blooms of Bressingham, North America. The package includes the 14 plants listed at left. For a smaller plan, you can purchase just 6 plants. All plants are approximately 4 to 6 inches in height when they are shipped. Though some of the plants may bloom in the first season, it takes a couple of years for plants to reach their ultimate size and full performance. Shipping will begin after June 15. **Please place your order for this garden early as there is a limited supply and it is available on a first-come, first-served basis.**

#441014 Winning Combination 1 (14 plants)\$67.81

#441006 Smaller Combination 1,
(6 plants — 1 phlox, 2 black-eyed Susan and 3 speedwell)\$30.89

www.GardenPlans.com

KEY: GGPN

Save
\$1.00
on your
next plan



Winning Combination 2

full sun

This plant combination peaks in mid- and late summer and provides an interesting contrast of shape, texture *and* color.

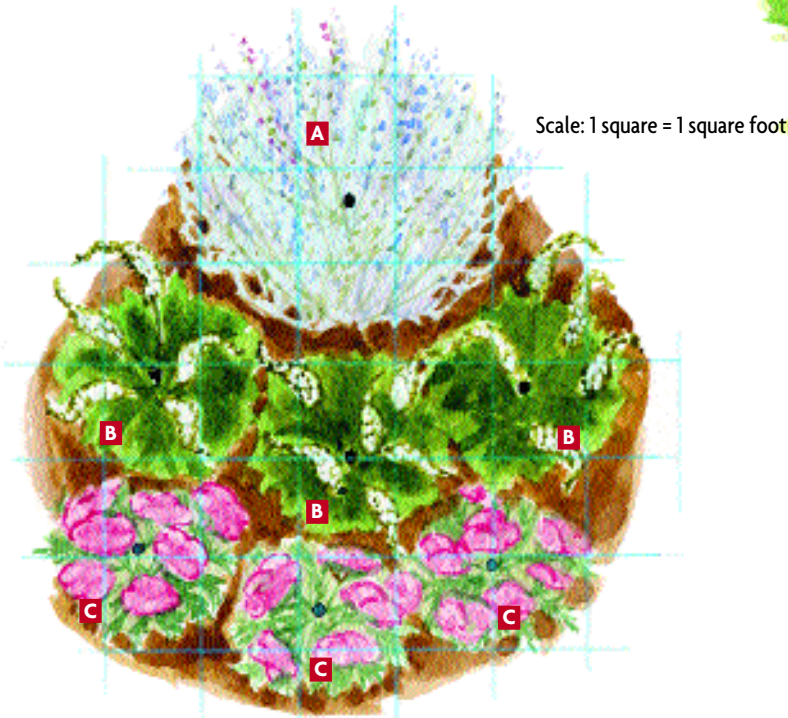
The garden will start with the flat-headed clusters of pink yarrow. Then in midsummer, there's no mistaking the unique shape of gooseneck loosestrife's blooms. The nice thing about it is that it fills in quickly. However, be prepared to keep after it because it does like to spread. Since it spreads by both roots and seeds, you can contain it by growing the plants in sunken containers and deadheading spent blooms.

The airy blue Russian sage will finish off the season in late summer and autumn. All of these plants do best in full sun and well-drained soil.



Plant list

Code	Plant Name	Cold/Heat Zones	No. of Plants
A	Russian sage <i>Perovskia atriplicifolia</i>	4 to 9/9 to 1	1
B	Gooseneck loosestrife <i>Lysimachia clethroides</i>	4 to 9/9 to 1	3
C	Yarrow <i>Achillea millefolium</i> 'Heidi'	3 to 8/8 to 1	3



WE'VE DONE THE SHOPPING FOR YOU!

This collection of plants has been especially grown and packaged for you by Blooms of Bressingham, North America. It includes the 7 plants listed at left. All plants are approximately 4 to 6 inches in height when they are shipped. Though some of the plants may bloom in the first season, it takes a couple of years for plants to reach their ultimate size and full performance. Shipping will begin after June 15. *Please*

place your order for this garden early as there is a limited supply and it is available on a first-come, first-served basis.

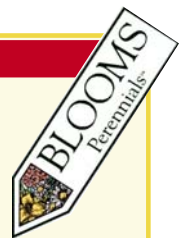
#441007 Winning Combination 2 (7 plants)\$39.88

**7 PLANTS
SHIPPED DIRECT
TO YOUR DOOR
FOR ONLY
\$39.88**

PRICE INCLUDES
SHIPPING

TO ORDER, CALL 1-800-978-9631

KEY: GGPN



NOTE: Because of restrictions, we are unable to ship plants outside the continental United States or to the following states: AZ, CA, HI, ID, NV, OR, UT and WA. All plants will be shipped from Smoketown, PA, via Federal Express Freight Saver, a maximum of 3 days in shipping.

Winning Combination 3



This garden combination will add color to a partly sunny spot in your yard midspring through midsummer and attract hummingbirds, as well.

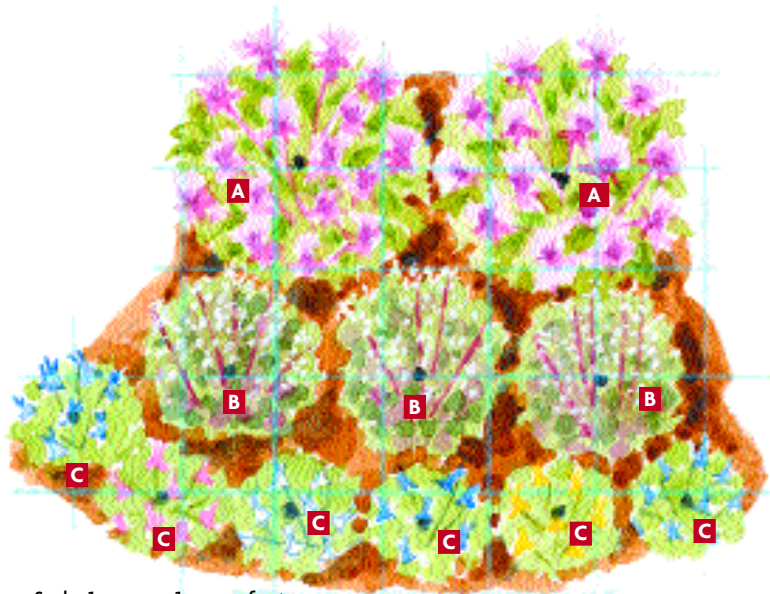
'Biedermeier' columbines bloom in red, purple, pink, white and yellow in midspring. Allow them to set seeds and you'll have more and more as the years go by.

The burgundy foliage of 'Palace Purple' coral bells will remain attractive even after the white flower spikes have faded in early summer. And in midsummer, bee balm's colorful purple blooms will appear atop leaves with a minty fragrance. Bee balm does tend to spread, so be prepared to share some with friends in the future.



Plant list

Code	Plant Name	Cold/Heat Zones	No. of Plants
A	Bee balm <i>Monarda</i> 'Blaustrumpf' ('Blue Stocking')	4 to 8/8 to 1	2
B	Coral bells <i>Heuchera micrantha</i> 'Palace Purple'	4 to 8/8 to 1	3
C	Columbine <i>Aquilegia xhybrida</i> 'Biedermeier'	3 to 8/8 to 1	6



Scale: 1 square = 1 square foot

WE'VE DONE THE SHOPPING FOR YOU!

This collection of plants has been especially grown and packaged for you by Blooms of Bressingham, North America. It includes the 11 plants listed at left. All plants are approximately 4 to 6 inches in height when they are shipped. Though some of the plants may

bloom in the first season, it takes a couple of years for plants to reach their ultimate size and full performance. Shipping will begin after June 15. **Please**

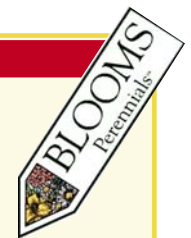
place your order for this garden early as there is a limited supply and it is available on a first-come, first-served basis.

#441011 Winning Combination 3 (11 plants)\$55.84

**11 PLANTS
SHIPPED DIRECT
TO YOUR DOOR
FOR ONLY
\$55.⁸⁴**

PRICE INCLUDES
SHIPPING

TO ORDER, CALL 1-800-978-9631



KEY: GGPN

NOTE: Because of restrictions, we are unable to ship plants outside the continental United States or to the following states: AZ, CA, HI, ID, NV, OR, UT and WA. All plants will be shipped from Smoketown, PA, via Federal Express Freight Saver, a maximum of 3 days in shipping.